



<https://techwhiz.hmu.gr>

Newsletter

September 2024



Co-funded by the
Erasmus+ Programme
of the European Union

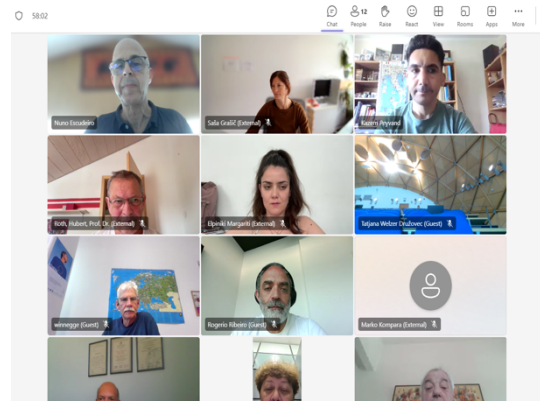
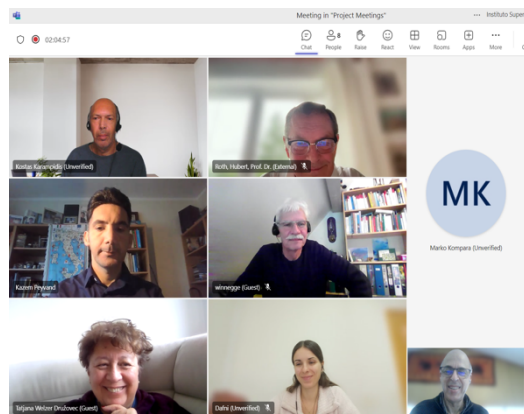
This project is funded with support from the European Commission. This newsletter reflects the views only of the author, and the Commission cannot be held responsible for any use which may be made of the information contained herein.

News

The TechWhiz project, “Sign Language Dictionary of Technical Terms for Education”, is an ERASMUS+ funded project that started on 1st of January 2022 under the coordination of the Medidata (PT) and a partnership of another 5 organizations, namely, Instituto Politecnico Do Porto in Portugal, the Hellenic Mediterranean University in Greece, the University of Maribor in Slovenia, the University of Siegen in Germany and the European Association of Career Guidance in Cyprus.

TechWhiz partner’s online meetings

On March 1st and June 13th partners met online to discuss current status of the project and agree on future actions. The consortium confirmed the excellent cooperation between its members and the objectives for the next period of completion of the project were set.



TechWhiz Results

The project' results are ready!!! We are happy to report that the project fulfilled its goals, and the main tools that are included to the TechWhiz platform, namely the TechWhiz Studio (an application to configure sign language), the TechWhiz Gloss Loader (a web-based solution to facilitate interpretation of the spoken language to sign language) and TechWhiz Dictionary (an online dictionary that define the searched terms in a sign language using the visualization from the Studio and the definitions from the Gloss Loader), are completed. The tools are available to try for yourself. Just click on the images to visit them. We advise prior using the tools, to visit our [YouTube channel](#) or the enroll into the [Course](#), to familiarize yourself with them.

The Dictionary (PR1)

The Dictionary is the core project result and the one that satisfies in its own the project goal. However, the explanations available at the Dictionary require the other two components which are the tools that support the creation and maintenance of the glossaries and the sign language explanations available for search at the Dictionary. You can find the Dictionary [here](#).

The Gloss Loader (PR2)

The TechWhiz Gloss Loader allows experts from the technical fields to upload explanations in spoken language and sign language experts to load the corresponding sign language gloss (a gloss is a sequence of words from a spoken language that represent the signs in a sign language sentence). The Gloss Loader is a crucial component for a dynamic live dictionary since it will make the glossaries editable and maintainable by registered users. This [video](#) gives an overview of the TechWhiz Loader in operation. You can find the Gloss Loader [here](#).

The Studio (PR3)

The TechWhiz Studio is a tool allowing sign language experts to create and load new sign animations in a specific sign language. This component links TechWhiz to the VirtualSign 3D avatar that will produce the sign language explanations. When a new explanation includes new signs they will be configured at the Studio by sign language experts and, after being validated, they will become available for all. The Gloss Loader and the Studio empower experts to co-create glossaries for specific fields of knowledge. This [video](#) gives an overview of the TechWhiz Studio in operation. You can find the Studio [here](#).

The Course

To showcase the results of the TechWhiz project, a course has been created which is freely available to all. The course consists of videos that introduce the purpose of the project, the elements that make up the final solution and individual tools are presented (TechWhiz Studio, Gloss Loader and Dictionary). The course also includes instructions on how to access these tools so that you can try them out for yourself. At the end of the course, there is also a certification, which you get by passing an exam that demonstrates your knowledge and ability to use the TechWhiz environment and its tools. The TechWhiz course is available at <https://study.athenauni.eu/course/view.php?id=3> (Athena Moodle registration required).

GET IN TOUCH WITH US

Website: <https://techwhiz.hmu.gr>

Contact Email: rogerio.ribeiro@medidata.pt

Find us on 

Linked 



This project is funded with support from the European Commission. This newsletter reflects the views only of the author, and the Commission cannot be held responsible for any use which may be made of the information contained herein.